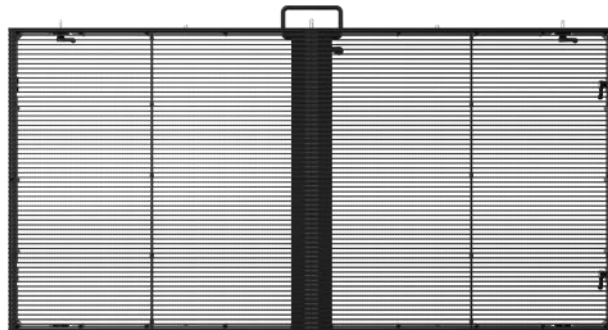




CLEARVIEW PANEL



USER MANUAL

Table of Contents

Safety Information.....	3
Specifications.....	4
Main Power Connection.....	5
Signal Connection.....	5
Rigging the Fixture.....	6
Installation.....	6
Parts List.....	7
Accessories.....	8
Cleaning & Maintenance.....	10

Check that the unit has not been damaged during transport



Read all cautions and warnings
prior to operation of this
equipment

Protection Against Fire



Fire

1. Maintain a minimum of 1 foot distance from any type of flame.
2. Do Not install the unit too close to a heat source.
3. Make Sure cables are properly secured
4. Maximum surface operating temperature below 115°F
5. Do not operate panel with out output ethernet and power connection covered.

Protection Against Electrical Damage



Electrical

1. Disconnect power before servicing.
2. For connection to main power supply proceed to page 6.
3. This unit must be earthed. (electronically grounded)
4. Unit must not be left on for a long period of time.

Protection Against Mechanical Hazards



Mechanical

1. Use secondary safety when hanging unit.
2. Use quality rigging equipment when positioning unit.
3. Do not exceed number of hanging units per suspender.
4. Do not ground stack the unit with out proper hardware.

Ingress Protection



The IP rating is commonly expressed as **IP (Ingress Protection)** is followed by 2 numbers (i.e. 65) where the numbers define the fixture rating. The first number indicates the size of a particle that can enter the fixture. The second number indicates the extent of protection against water entering the fixture. An IP65 rating in this fixture indicates that dust particles can not enter the fixture. And there is protection against jets of water spray from entering the fixture from any direction.

Specifications

Item# MV411 = Clearview

Physical Parameter	Pixel Pitch	3.9H—7.8V
	LED Type	SMD1921 Black Face
	Panel Pixel Count	256 x 64
	Panel Density Count	16384
	Panel Size	1000 X 500 X 68mm
	Module Size	500mm X 62.5mm
	Panel Weight	13lb / 5.8kg
	Module Weight	
Electronics	Receiving Card	Subito RSRL3000 LEO
	Grayscale (bit)	14bit
	Grayscale per color (level)	16384
	Refresh Rate (specified at ordering)	1920
	Driving Type	1/16
	Driving IC	ICN-2053
	Signal Distance	CAT5 Cable 100M
Optical	Brightness (nit)	3000nit
	Optimal Viewing Angle Horizontal	160°
	Optimal Viewing Angle Vertical	160°
Electrical	AC Input Voltage	100-240V AC 50/60Hz
	AC Power Supply Max	300W
	AC Maximum Power Input (Full White)	201W / 1.74Amp @ 110V
	AC Average Power Input	150W
	Power Connection	Cable Mounted Seetronic In/Out
	Signal Connection	Cable Mount Seetronic Ethernet In/Out
	Power Supply	A-Plus AP216
	Power Link at 110V (using Nema 5-15 connection)	8
	Power Link at 220V (using Nema 6-20 connection)	16
Ambient Conditions	IP Rating	IP65
	Average LED lifetime	
	Working Ambient Temperature	0-40
	Working Humidity (RH)	10%-60% Non Condensing
Installation	Vertical Rigging Quantity (pcs) with appropriate hardware	20
	Stacking Quantity (pcs) with appropriate hardware	10
	Optional Curve Panel Available	-10° / +10°
	Service	Front Screw Module

Specifications and Certification are subject to change with out any prior notice





Main Power Connection

Caution!

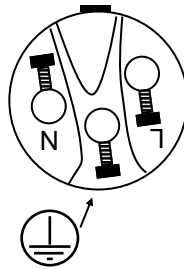
1. This unit must be earthed. (electronically grounded)
2. Replace fuse only with the specified type and rating.
3. Power link maximum 8 units at 110V
4. Power link maximum 16 units at 220V

This device is equipped with a auto switching power supply that will allow you to work from 100V-240V 50/60Hz

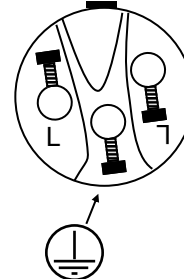
The occupation of the connection-cable is as follows:

Cable (USA)	Cable (EU)	Pin	110V	220V
Black	Brown	Live	L	L
White	Light Blue	Neutral	N	N
Green	Yellow/Green	Ground		

110V
Connection

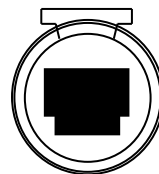
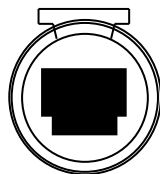


220V
Connection



Signal Connection

The fixture is equipped ethernet cable mounted connections for signal input and output. Only use a multiple twisted pair cable designed for ethernet., in order to connect the controller with the panel or the panel with another.



Caution!

Signal cable should not travel near high output power. As not to interfere with signal
Signal cable should not be longer than 100 Meters.

Rigging the Fixture

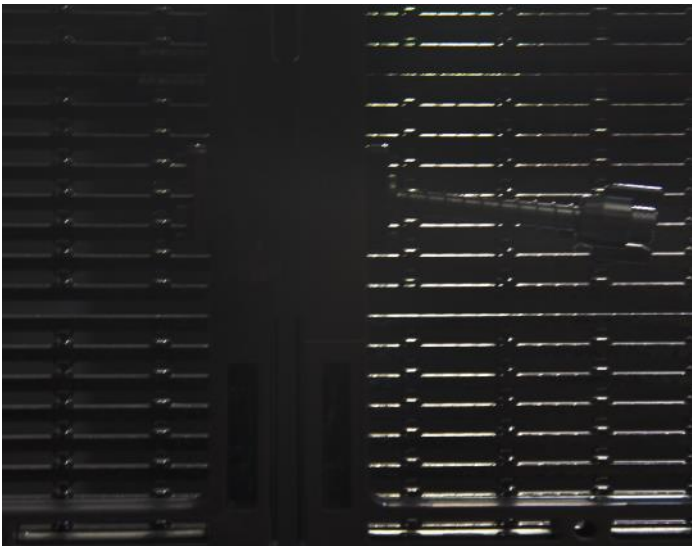
Caution!

1. The installations must be carried out by an authorized dealer or trained professional.
2. Unit may cause severe injures if you have doubts concerning the safety do not install.
3. Unit is to be 24inches away from flammable materials (decoration material)
4. Use high quality installation equipment to hang unit.

When rigging a unit it is very important that you follow common safety procedures. Rigging requires extensive experience including but not limited to calculating working loads, material being used and periodic safety inspections. If you lack these qualifications, do not attempt the installation yourself, instead use a professional structural rigger.

When rigging the unit always be secured with a secondary safety attachment. The installation location of the panels has got to be built in the way that it can hold 10 times the weight for 1 hour with out any harming. Installation should be checked at least one time a year by a skilled person.

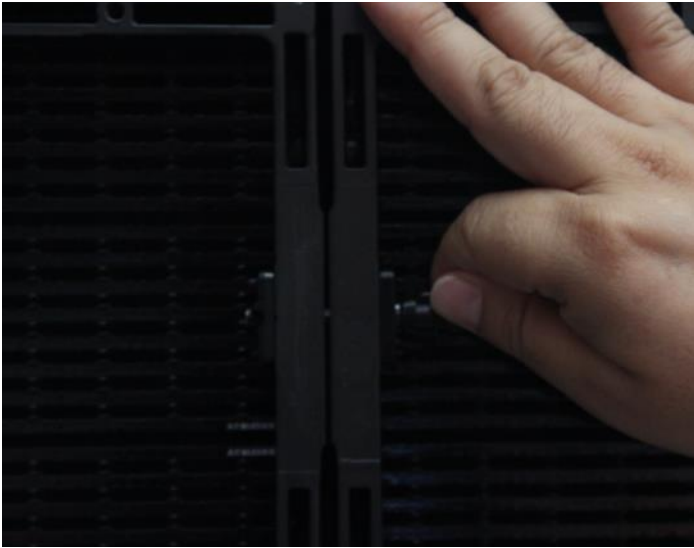
Latch Top and Side Installation



1. Latch has to be pulled out

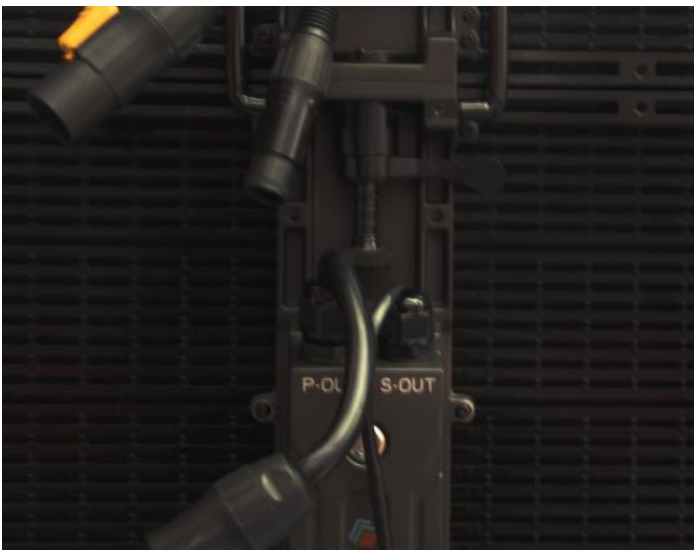


2. Push latch into the receiving latch position. Make sure the latch insert has passed the locking point. Turn the center of the shaft clockwise quarter turn.



3. Before tightening the latch make sure the panel is at the correct level and depth as what you would like.
4. Tighten by turning outer shaft clockwise. (note, do not over tighten this screw it should be just hand tight)

Center Latch



1. Align panel so the latch is ready for insertion in to the receiving plate



2. Press latch upwards so the latch pins are past the receiving mount



3. Turn the center shaft clockwise so the pin are facing forward and back



4. Turn the latch handle clockwise to lock the latch in the secure position

Parts List

CLEARVIEW 411 ITEM LIST

Part Number	Description
MV-411-SUS-1	CLEARVIEW 1 UNIT SUSPENDER
MV-300-SUS-JOI	SUSPENDER JOINER
MV-411-CAB-POW-MAI	POWER LEAD CABLE WITH NEMA 5-15
MV-411-CAB-POW-FEM	FEMALE POWER JUMPER CABLE
MV-411-CAB-POW-MAL	MALE POWER JUMPER CABLE
MV-411-CAB-SIG-LEA	SIGNAL LEAD CABLE
MV-411-CAB-SIG-JUM-MAL	MALE TO MALE SIGNAL JUMPER
MV-411-CAB-SIG-JUM-MF	MALE TO FEMALE SIGNAL JUMPER
MV-411-CAB-SIG-JUM-FEM	FEMALE TO FEMALE SIGNAL JUMPER
CAS-MV-411-8	8 UNIT ROAD CASE
MV-411-ACC-PAN-JOI	PANEL JOINER (W/BOLTS)
MV-411-ACC-HAR-MOU	HARDWARE MOUNT (W/BOLTS)
RSRL3000	SUBITO LEO RECEIVING CARD
PARTS	
MV-411-LED	REPLACEMENT LED
MV-411-LED-MOD-RIG	RIGHT SIDE LED MODULE
MV-411-LED-MOD-LEF	LEFT SIDE LED MODULE
MV-411-PCB-HUB	REPLACEMENT HUB
MV-411-HOU-LAT	LATCH
MV-411-HOU-LAT-CEN	MIDDLE LARGE LATCH
MV-314-POW	POWER SUPPLY
MV-314-MAS	LED MASK

Accessories

MV-411-SUS-1



MV-300-SUS-JOI



Cleaning and Maintenance

Installation Maintenance: The operator has to make sure that the unit is operating safely and has the installations and electronics checked by an expert every 2 years.

The following points have to be considered during the inspection:

- 1) All screws used for installing the device or part of the device have to be tightly connected and must not be corroded.
- 2) There must not be any deformations on the housing, fixation and installation spots (ceiling, suspension, trussing).
- 3) The electronic power supply cables must not show any damages, material fatigue (e.g. porous cables) or sediments.
Further instructions depending on the installation spot and usage have to be adhered by a skilled installer and any safety problems have to be removed.

Disconnect from mains before starting maintenance operation!



Caution Danger to life!

Electrical

We recommend a frequent cleaning of the device. Please use a moist, lint free cloth. Never use alcohol or solvents!

- 1) The objective lens will require periodic cleaning on usage and environment. Environment with foggers will require more periodic cleaning as fog fluid tends to build up residues, reducing the light output.
- 2) Lenses may be cleaned with soft brush using soapy water.
- 3) The interior of the fixture should be cleaned using a vacuum.

Note: There is no serviceable parts inside the device . Maintenance and service operations are to be carried out by authorized dealers.

Replacing the fuse: There is no service fuse inside the fixture.

Replacing the power cable: If the power cable of this device becomes damaged, it has to be replaced by authorized dealers only

Should you have further questions , please contact your dealer.

Warranty Information

Warranty Conditions

-Unless otherwise stated in writing, your product is covered by a one year parts and labor limited warranty.

-LED's are not guaranteed to match in color or output.

-It is the owner's responsibility to furnish receipts or invoices for verification of purchase, date, and reseller or distributor. If purchase date cannot be provided, date of manufacture will be used to determine warranty period.

-Goods returned under warranty must follow the proper authorization procedure and must be accompanied by a copy of the original invoice.

-Goods repaired under warranty will be returned to the owner with the freight prepaid by MSI via the most economical means of shipment.

-Repair or replacement as provided for under this warranty is the exclusive remedy of the consumer. MEGA SYSTEMS INC. makes no warranties, express or implied, with respect to any product, and Mega Systems specifically disclaims any warranty of merchantability or fitness for a particular purpose. Mega Systems shall not be liable for any indirect, incidental or consequential damage, including lost profit, sustained or incurred in connection with any product or caused by product defect or the partial or total failure of any product regardless of the form of action, weather in contract, tort (including negligence), strict liability or otherwise, and weather or not such damage was foreseen or unforeseen.

- Warranty is void if the product is misused, damaged, modified in any way, or for unauthorized repairs or parts. This warranty gives you specific legal rights, and you may also have other rights which vary from state to state.

Customer Support

Mega View has a customer support line to provide set up help and to answer any question should you encounter a problem. Please visit our website for any other related technical documents. For service related issue please contact our service dept.

Monday—Friday 9am to 6pm CST
Voice: 210-684-2600
E-mail: service@megasystemsinc.com

Specifications in this manual are subject to change.

Manual Version

Please Visit www.megasystemsinc.com for the most up to date manual version

Document Version	Date	Fixture Software	Notes
1.1	08/19/20	V1.1	



18668 Highway 16N
Helotes, TX 78023
Ph 210-684-2600 Fax 210-855-6279
www.mega.lighting / info@mega.lighting.com